

dataflow



DATAFLOW (UK) LIMITED
DATAFLOW HOUSE
MILL MEAD
STAINES
MIDDLESEX
TW18 4UQ

TEL: 01784 454171
FAX: 01784 460806
E-MAIL: info@dataflow.co.uk



dataflow

V7.003
Release Notes

TABLE OF CONTENTS

NEW ADDITIONS

NEW ADDITIONS	4
GENERAL	4
USERS	4
• Company Details	4
• Alerts.....	5
SETUP	8
• VAT Parameters.....	8
TOOLS.....	8
• Data Import.....	8
• MVA Export.....	9
OPTIONS.....	10
• Parameters.....	10
SALES/PURCHASE LEDGER	11
• Default/ Company Parameters	11
SALES LEDGER	11
• View Accounts.....	11
INVOICING.....	12
• Document Invoicing Control	12
SETUP	12
• Document Design	12
NOMINAL LEDGER	13
ACCOUNT ENQUIRY.....	13
REPORTS.....	13
• Balance Sheet/ Profit and Loss Report	13
• Profit and Loss Report	13
SETUP	13
• Cost Centres.....	13
STOCK LEDGER	14
SETUP	14
• Stock Item Setup	14
REPORTS.....	18
• General	18
• Stock Check Listing Report.....	18
• Stock Valuation Report	18
• Stock Price Lists	18
SALES/ PURCHASE ORDER PROCESSING	21
ORDERS.....	21
• Document Control	21
• Part Deliver/Invoice an Order on Value.....	22
REPORTS.....	22
• Forward Load of Outstanding Orders.....	25
PURCHASE ORDER PROCESSING	25
ORDERS.....	27
• Document Control	27
SETUP	27
• Document design	27

SYSTEM CORRECTIONS.....	28
GENERAL.....	28
TOOLS.....	28
• Data Import.....	28
• MVA Export.....	28
SALES LEDGER.....	28
• View Accounts.....	28
INVOICING.....	28
• Document Import Control.....	28
NOMINAL LEDGER.....	29
• Accounts Enquiry.....	29
SETUP.....	29
• Cost Centres.....	29
STOCK LEDGER.....	29
• Stock Enquiry.....	29
REPORTS.....	29
• Stock Valuation Report.....	29
• Stock Check Listing Report.....	29
SALES/ PURCHASE ORDER PROCESSING.....	29
ORDERS.....	29
• Document Control.....	29

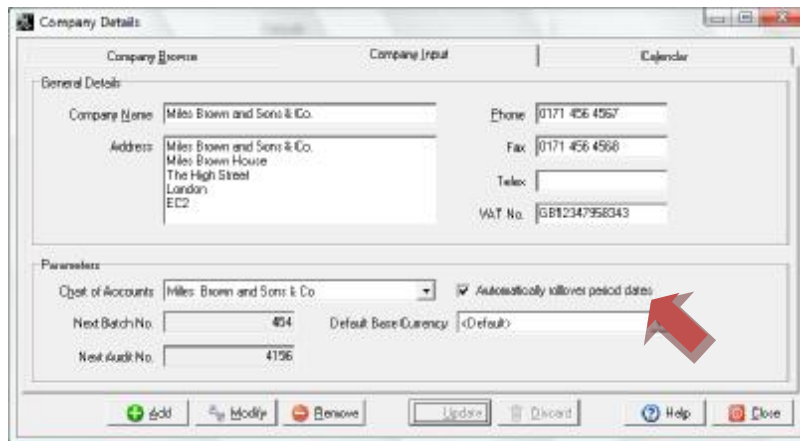
NEW ADDITIONS

General

Users

- **Company Details**

A new 'Automatically rollover period dates' option has been added to the 'Parameters' section of the 'Company details' window.



- If this parameter is checked the system will continue working in exactly the same way as it has prior to the update and will automatically generate and insert new periods into your company calendar when you come to close existing periods. The period dates that the system chooses to insert are based upon your previous calendar periods in the prior year.

This parameter will be checked by default after the upgrade has been applied

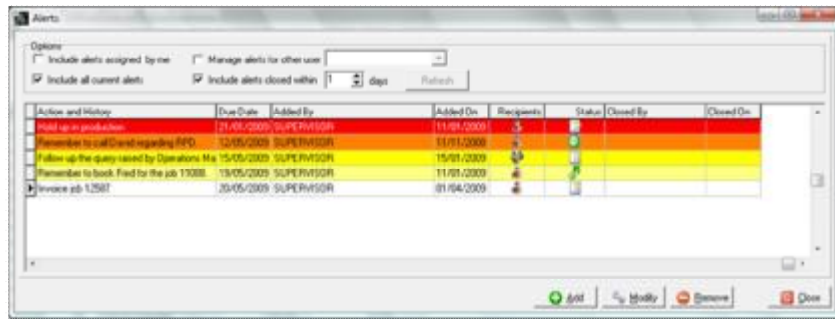
- If the parameter is unchecked the next time you close a period, the system will request that you select the corresponding period end date for the next financial year.

This option will benefit companies who, for example, wish to set the last Friday of every month as their period end date. This day will always be a different date each year, so the system would be unable to automatically set this date for you.

If you choose to use this option please be aware that it may be necessary to remove periods pre-generated by the system before parameter was changed

- Alerts

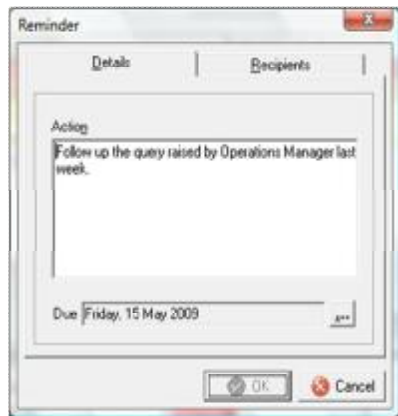
A new 'Alerts' facility has been added to the system and acts as an easy-to-use mini organiser that allows you to create and manage alerts for yourself or other *dataflow* users and is new to version 7.



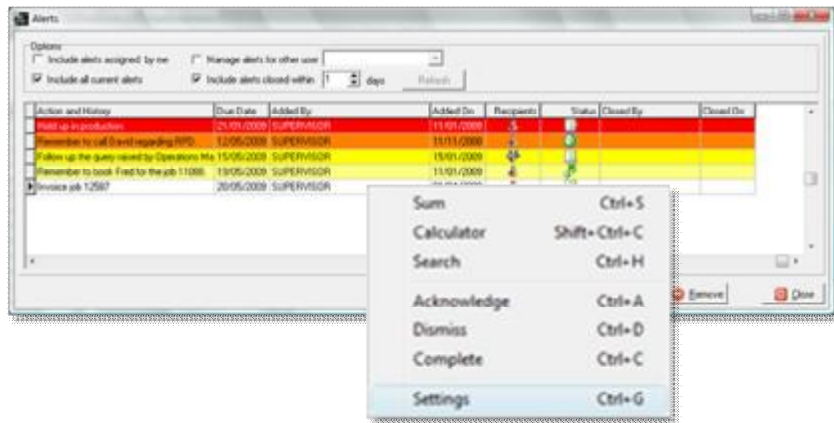
Adding and managing alerts is a very simple procedure and is activated by either clicking 'Add' to add a new alert, or 'Modify' to edit an existing one.

Selecting either 'Add' or 'Modify' activates the 'Reminder' window. The options and window layout are identical regardless of whether you select either 'Add' or 'Modify', allowing you to simply type in the action you wish to be reminded of and specify the date you need to accomplish the action by.

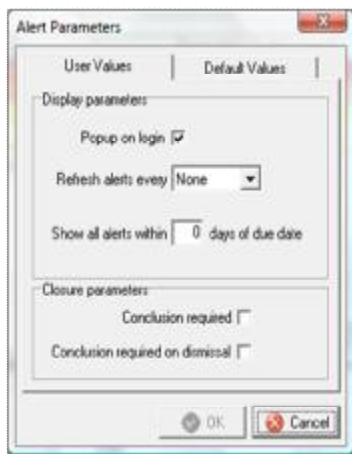
If you find that you wish to set up a general reminder rather than a specific reminder for yourself, you have the facility to include other 'Recipients'. Including additional recipients assigns your reminder to their username so they will also see this reminder when they access the 'Alerts' window.



Once you have added your alerts you can activate a sub-menu by holding the cursor over the grid and clicking the right mouse button. Within the sub-menu you will notice a number of options, one of which will be 'Settings' as detailed below.



Selecting the settings menu opens up the 'Alert Parameters' window.

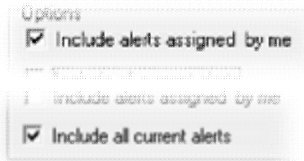


As you can see from the above screenshot the 'Alert Parameters' window allows you to customise and control how the information is displayed and managed within the 'Alerts' grid in the main window.

You will notice the 'Popup on login' option. If this option is checked the 'Alerts' window will automatically open along with the main *dataflow* toolbar, allowing you to review your alerts at the beginning of the day. If the 'Popup on login' option is turned off you can manually open the 'Alerts' window by navigating to the 'Users' menu option on the main toolbar and then down to 'Alerts' in the Users submenu.

The parameters in the 'Default Values' tab are identical to those in the 'User Values' tab, although the 'Default Values' tab can only be accessed using the 'Supervisor' login and any parameter set within this tab will override any 'User Value' setting.

On the main Alerts window screenshot you will notice a number of display options available to you:

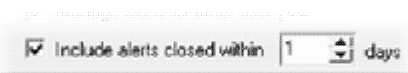


Checking this option will display alerts assigned to your user name.

Checking this option includes all active alerts in the grid.



Checking this option filters the view to display alerts for the specified user only.



Checking this option filters the view to display alerts closed within the specified number of days.

You will also notice that the alerts displayed within the grid are colour coded. The colours represent the following criteria:

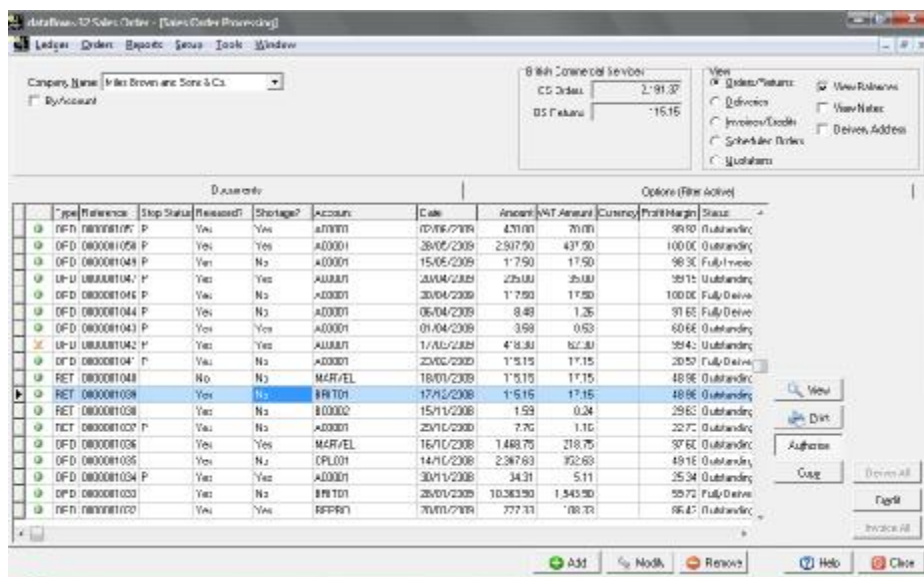
- Represents an elapsed alert
- Represents an alert that is due to elapse in the next 24 hours
- Represents an alert that is due to elapse in the next 3 days
- Represents an alert that is due to elapse in the next 7 days
- Represents an alert that is not due to elapse in less than 7 days

• **Enhanced Search**

A new facility has been added to the grids and combo drop-down selection fields where you now have the ability to search by “pasting” a value into the grid or combo field using ‘Shift Ins’ or ‘Ctrl V’ and the system will perform the search according to the search parameters currently set.

• **Line Filter Display**

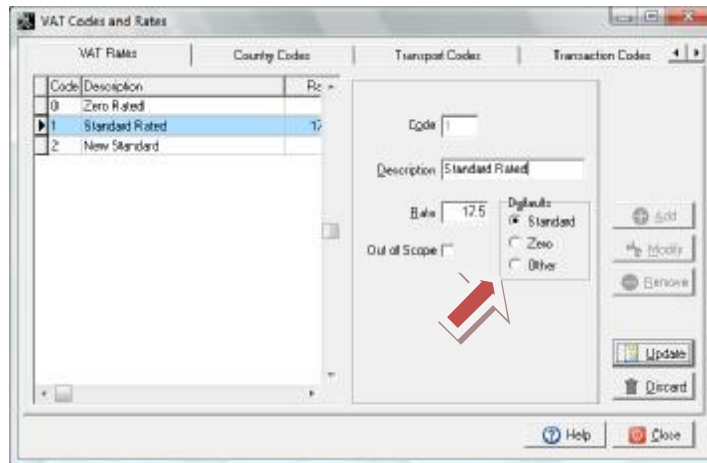
When any view filter is applied from within the ‘Options’ tab in any of the document control screens the text ‘Filter Active’ will appear on the tab header.



Setup

- VAT Parameters

You can now specify which VAT codes are to be set as the system default for 'Standard', 'Zero' or 'Other' rates within the 'Defaults' section of the 'VAT Rates' tab.

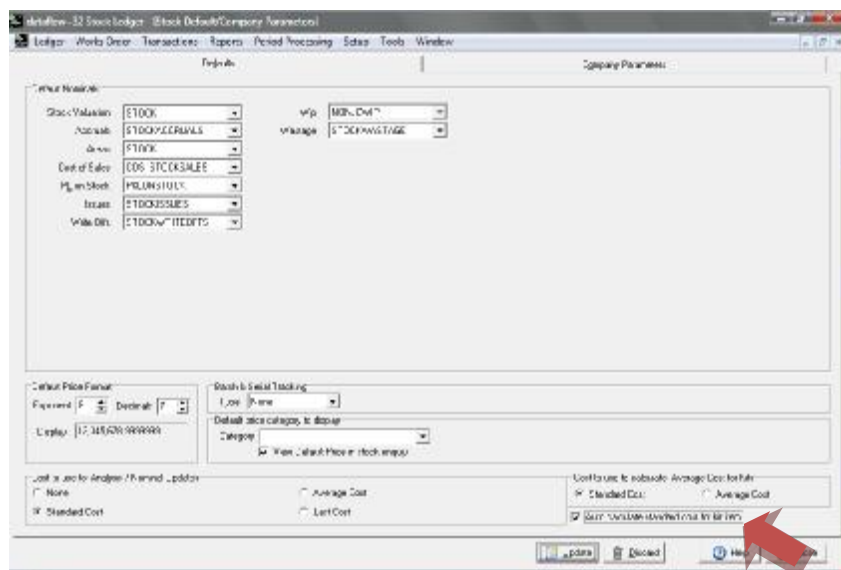


Tools

- Data Import

Cost Prices can also be imported in the system using the Data import utility found under the main 'Tools' menu.

- If the Standard Cost is imported for a stock item that is setup as a KIT Component the system will update the Standard Cost of the KIT if the parameter 'Auto Calculate standard cost for kit items' is checked within the Stock setup Default/ Company Parameters window.

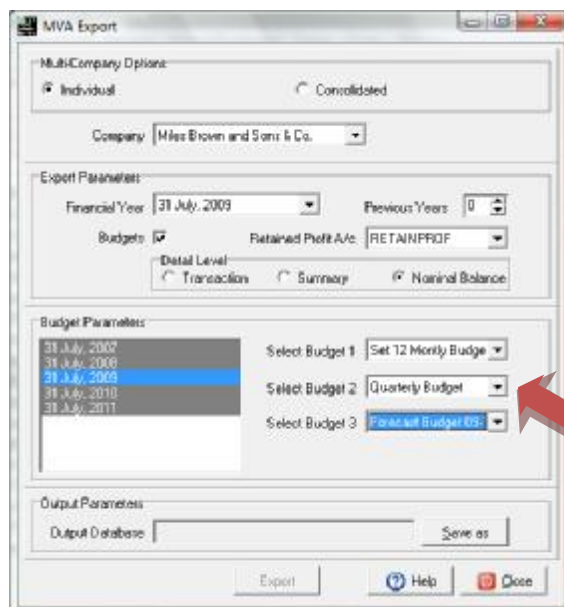


A new 'Allow Email?' parameter has been added to the 'Account Import Parameters' window which appears when importing either Sales or Purchase Ledger 'Account Details'. This parameter allows you to set 'Allow Email' to all of the accounts you are importing rather than having to include the field separately into the import structure.



- **MVA Export**

New parameters have been added to the MVA Export window to enable you to select and export multiple budgets.



Options

- Document Storage

The Document Storage module has now been added as standard. Detailed instructions on how to use this feature can be found within the document entitled *dataflow Document Storage instructions.pdf*.

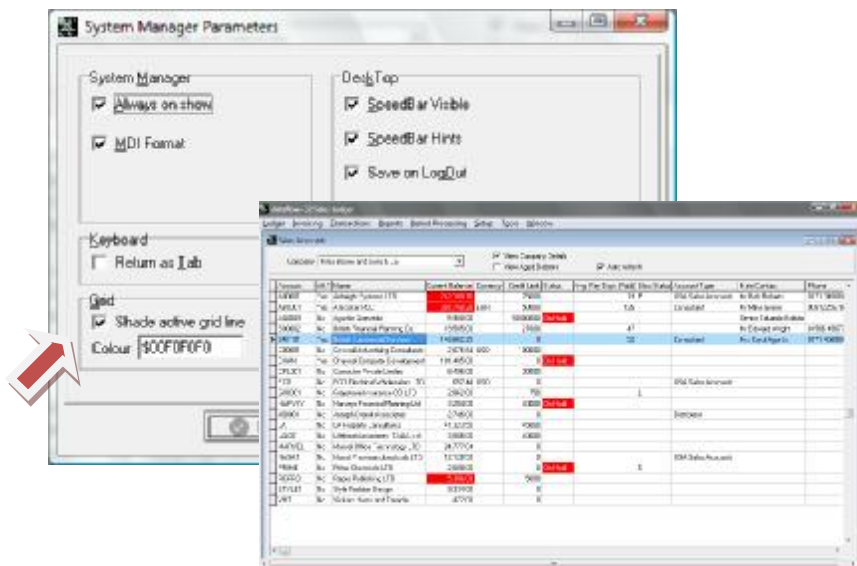
- Parameters

A new option to 'Shade active grid line' has been added to the standard grids in the system. The purpose of this feature is to clearly identify the line currently selected in a grid.

This option will be switched on by this upgrade. To adjust the shade of the highlight, or to turn the feature off, select the appropriate option in the 'right-click' menu of any grid.



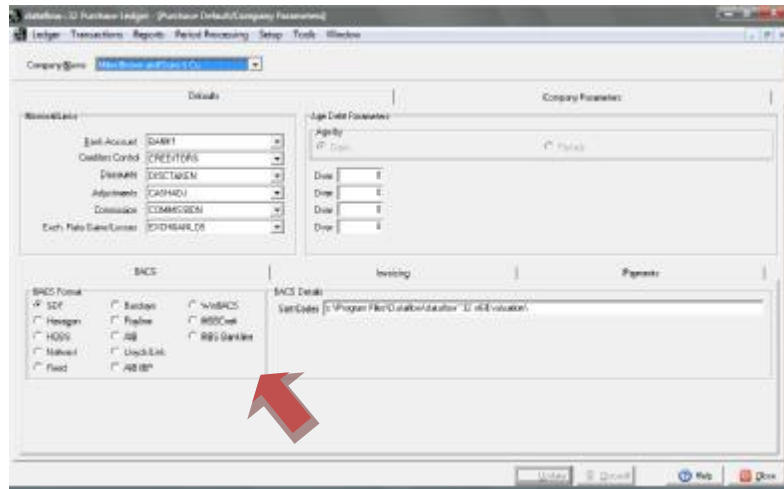
The highlight colour can also be set to a specific hexadecimal colour value in the 'System Manager Parameters' window.



Sales/Purchase Ledger

- Default/ Company Parameters

A new BACS output format called 'RBS Bankline' has been added to the existing available formats in the BACS tab for the Royal Bank of Scotland. Job Reference 8189

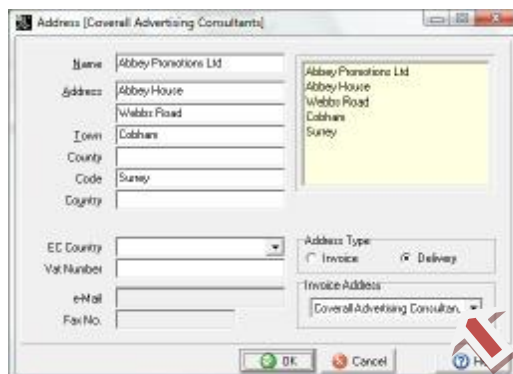


Sales Ledger

- View Accounts

When adding a new, or modifying an existing account delivery address, you now have the ability to assign a 'Default' Invoice address against that delivery address. The default invoice address will automatically populate the invoice address section, after selecting the relating delivery address, when creating Sales Document Invoices and Sales Orders.

If a default Invoice address is assigned to a delivery address you will not be able to alter the invoice address of a document.



Invoicing

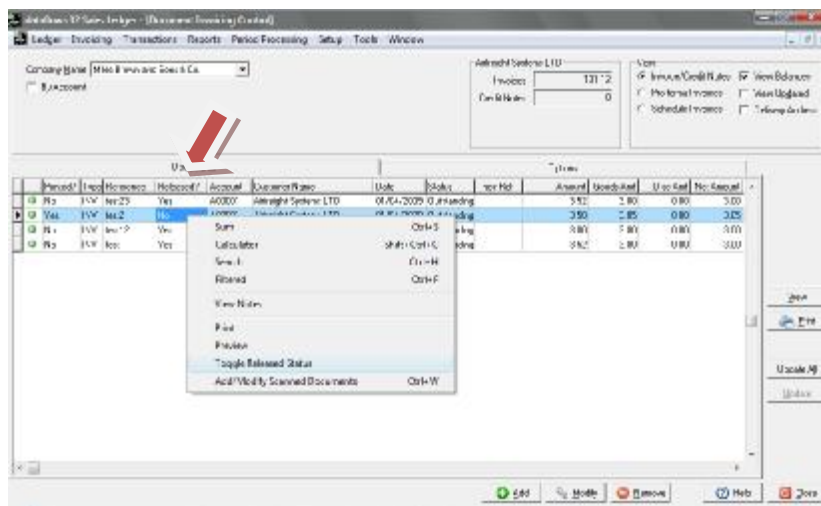
- Document Invoicing Control

The VAT summary rate field has been extended to incorporate 2 decimal places in the document template. Job Reference 8392

A new 'Released?' column has been added to all document control screens. If the transactions 'Released?' status is set to unchecked you will not be able to progress this document any further until it is 'Released'.



There is also a 'Toggle Released Status' 'Right Click' option allowing you to set either 'Yes; or 'No' to any transaction in the grid without having to modify the document.



Setup

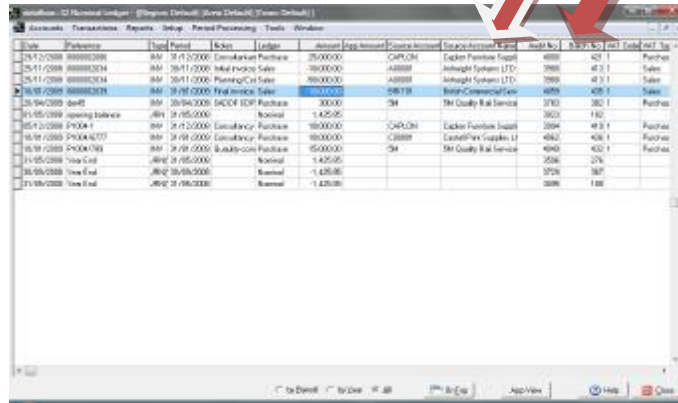
- Document Design

The email message text would not exceed 250 characters. This was found to be specific to SQL databases only and the number of available characters has now been increased. Job Reference 8450

Nominal Ledger

Account Enquiry

Additional columns 'Source Account' and 'Source Account Name' have been added to the cost centre enquiry when viewing transaction details.



Date	Particulars	Type	Period	Entry	Ledger	Amount	Exp. Account	Contra Account	Source Account Name	Credit No.	Debit No.	
25/11/2000	0000000000	BM	25/11/2000	Consultancy Purchase	2000000	2000000	CAPI/04	Eachnet Finance Dept	4000	4011	Purchase	
25/11/2000	0000000000	BM	25/11/2000	Initial stock Sale	9800000	9800000	A00000	Johnnight Systems LTD	7989	4011	Sales	
25/11/2000	0000000000	BM	25/11/2000	Planning/Cat Sale	9800000	9800000	A00000	Johnnight Systems LTD	7989	4011	Sales	
25/11/2000	0000000000	BM	25/11/2000	Final Invoice Sale	2000000	2000000	000100	Smith/Commercial/Gen	4000	4001	Sales	
25/11/2000	0000000000	BM	25/11/2000	INVOICE EXP Purchase	300000	300000	000100	SM Quality Mail Services	3700	3801	Purchase	
11/05/2000	Opening Balance	BM	11/05/2000			1,425,000				3800	1100	Purchase
05/12/2000	190041	BM	05/12/2000	Consultancy Purchase	1800000	1800000	CAPI/04	Eachnet Finance Dept	3004	4011	Purchase	
10/01/2000	19004101	BM	10/01/2000	Consultancy Purchase	1800000	1800000	000000	Eachnet/Fin/Support LI	4000	4001	Purchase	
10/01/2000	19004101	BM	10/01/2000	Bank/Comm Purchase	6500000	6500000	000100	SM Quality Mail Services	4000	4001	Purchase	
11/05/2000	Year End	BM	11/05/2000			1,425,000				3700	3801	Purchase
30/06/2000	Year End	BM	30/06/2000			1,425,000				3800	1100	Purchase

Reports

- Balance Sheet/ Profit and Loss Report

A new option to include 'Zero Balance' accounts has been added to the report parameters for both of these reports.

- Profit and Loss Report

New budget parameters have been added to the Profit and Loss report to enable you to report on 'Current Year' budgets, 'Last Year' budgets or both.



Setup

- Cost Centres

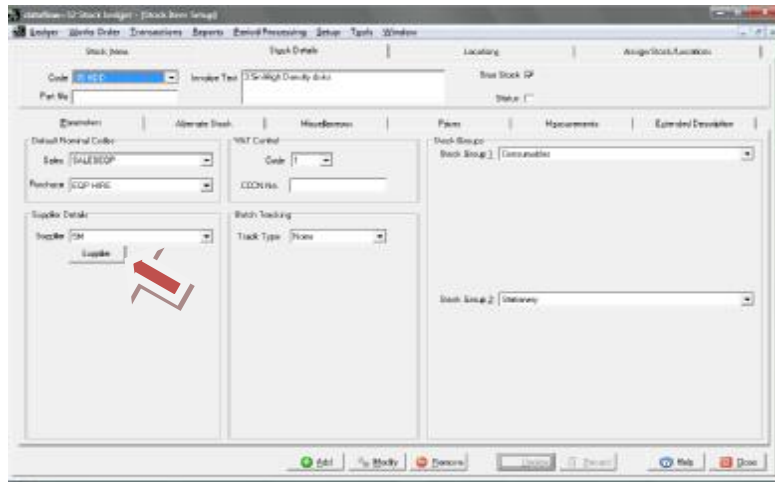
When establishing a tree structure in previous versions of the software you were still able to view Cost Centres in the list that had already been assigned to the tree when adding a new level or sub level. This area has been improved by the system filtering out those Cost Centres that have already been added to the tree structure, so you will now only be able to view unassigned Cost Centres when adding a new level or sub level into the tree.

Stock Ledger

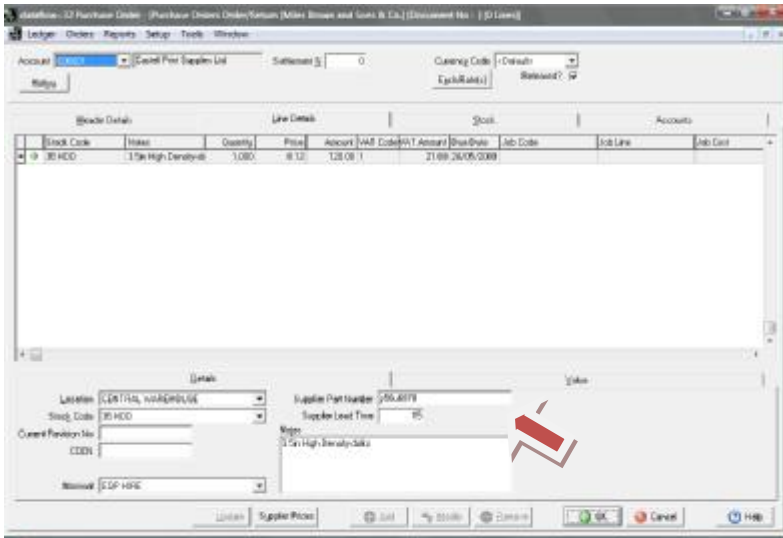
Setup

- **Stock Item Setup**

Currently you have the ability to specify the default supplier. You also now have the opportunity to detail multiple supplier accounts along with their 'Part Number' and 'Lead Time' by clicking the 'Supplier' button.



The 'Supplier Part Number' and 'Lead Time' information set up in the above window is pulled through to the Purchase Orders Order window when creating an Order, after selecting that supplier and stock code.

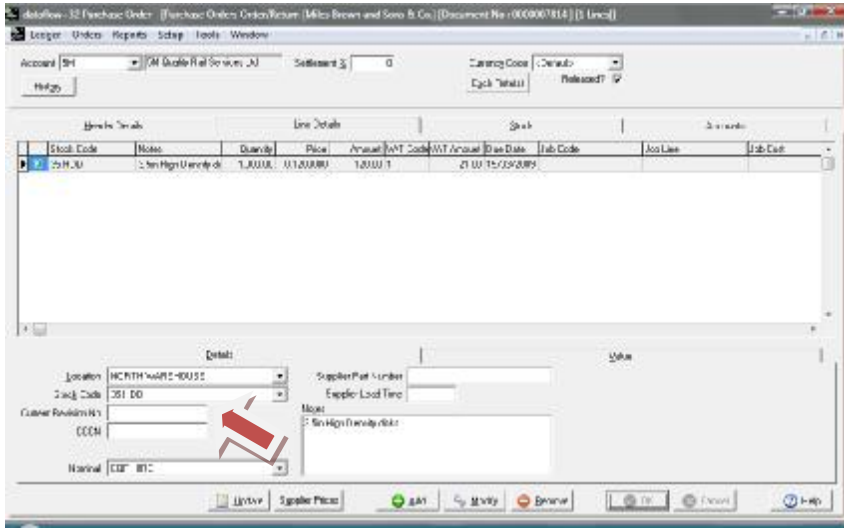


The 'Supplier Part Number' and 'Lead Time' information is also available when creating back to back Orders through the Sales Orders Ledger.

A new parameter has been added to the 'Miscellaneous Tab' to enable you to detail a 'Current Revision No.'.

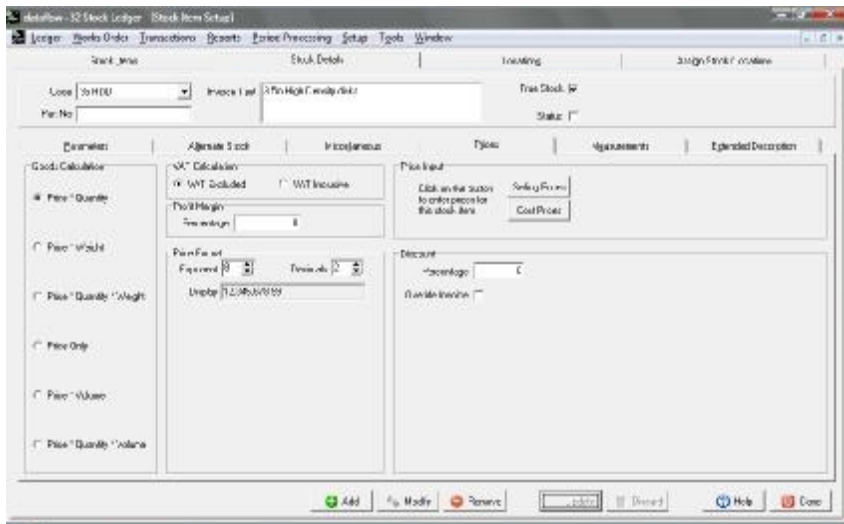


The 'Current Revision No' is automatically displayed when the relating stock item is selected when raising a Purchase Order.

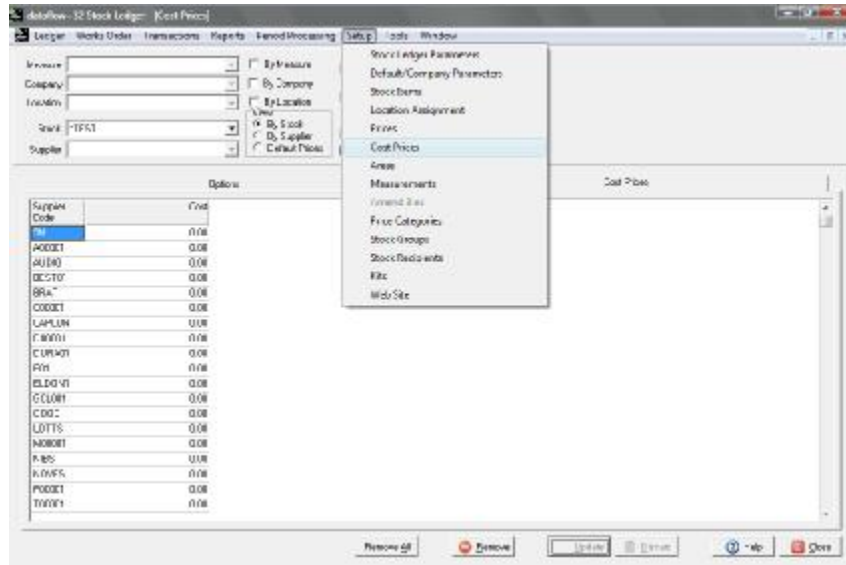


A new feature has been added enabling you to establish 'Cost Prices' for all or any Supplier Account set up in the Purchase Ledger.

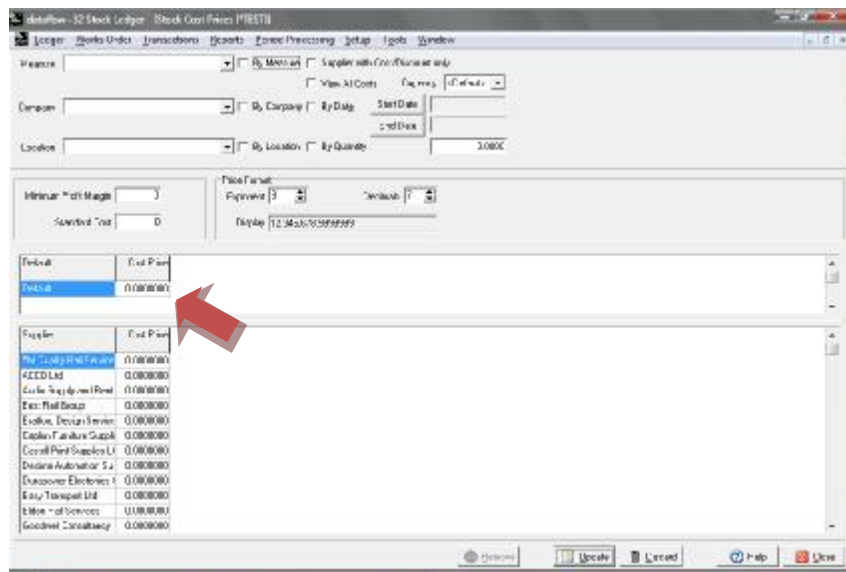
This new feature can be accessed by going through to the 'Stock Item Setup' window then the 'Prices' tab where you'll find a new 'Cost Prices' button.



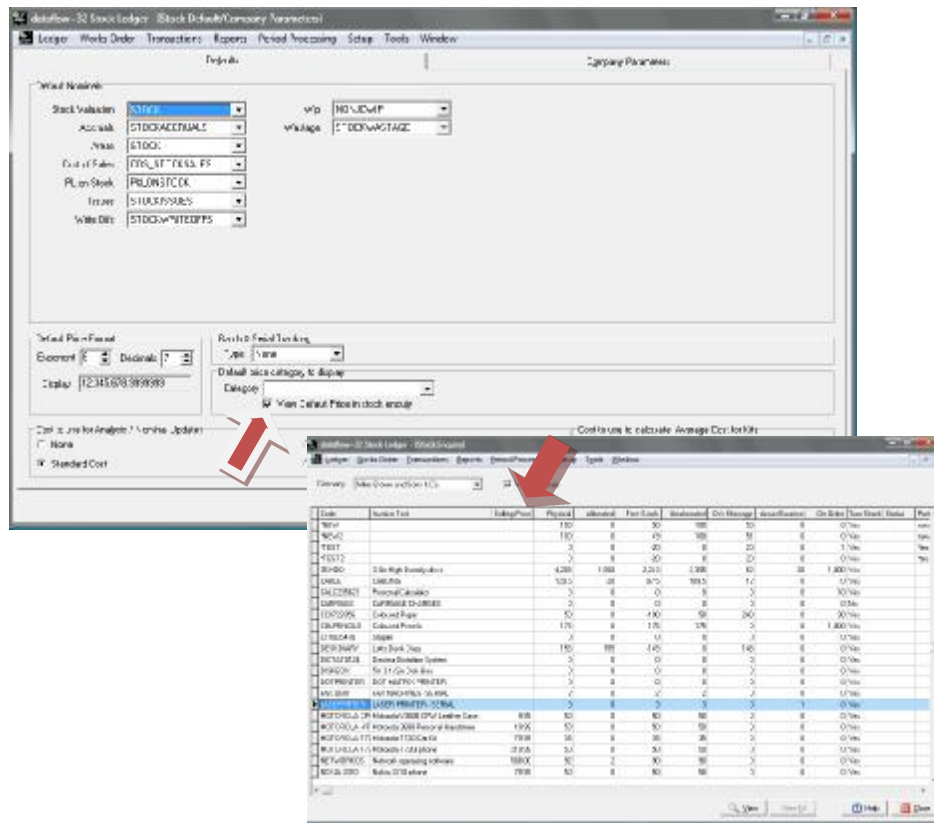
Or you can navigate through the Stock Setup menu to the 'Cost Prices' option.



Accessing the Cost Prices through the 'Stock Item Setup' window and 'Prices' tab gives you the option to specify a system 'Default' cost price input option. This default cost will be used if the transaction account has no alternative cost price setup.



If 'Default' cost prices have been set up you can specify whether the 'Default' cost prices are to be displayed in the Stock Enquiry by checking the parameter detailed below in the 'Stock Setup' 'Default/ Company Parameters' window within the 'Default price category to display' section.



Cost Prices can also be imported in the system using the Data import utility found under the main 'Tools' menu.

Reports

- **General**

If you have loaded images of your stock items against their 'Extended Descriptions' you can display those images on the Stock reports by adding the field expression 'G_GRAPHIC' to that document template and checking the 'Include Graphics' option in the 'Selection Criteria' of the report parameters.

- **Stock Check Listing Report**

The speed at which this report performs has been improved.

- **Stock Valuation Report**

The parameters for this report now include a 'Use Current Value' option. If this option is checked the report will display the current Average or Standard Cost and not the period costs during the calculation. Job References 8499, 8517

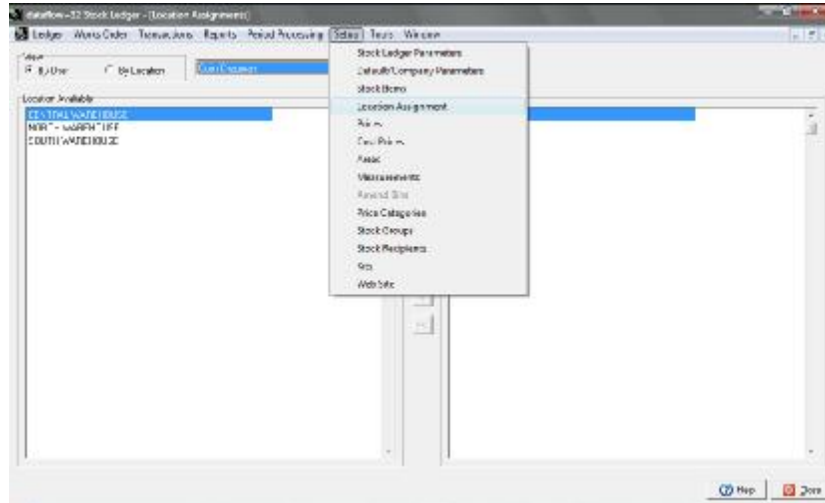
- **Stock Price Lists**

The CCCN number has been added as an available field to the document design template for this report. Job Reference 8437

Setup

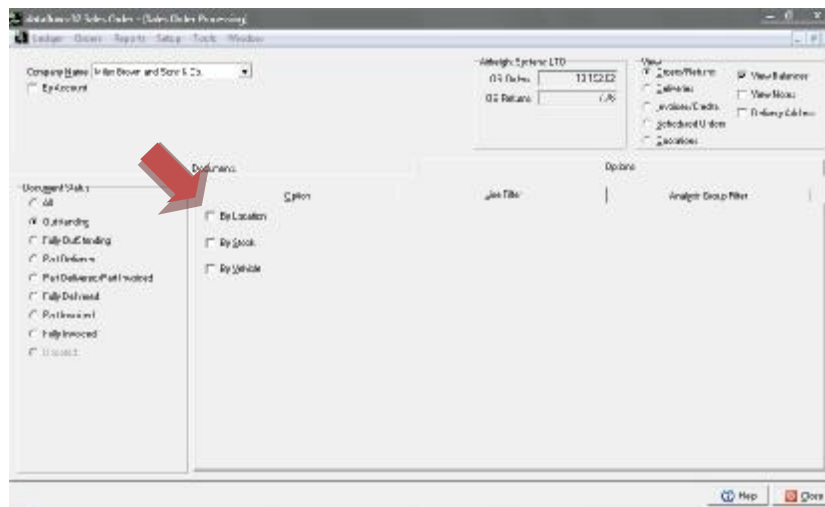
- Location Assignment

A new 'Location Assignment' option has been added to this menu enabling you to assign selected 'Locations' to particular users (with the exception of the 'SUPERVISOR' login which will always have full access). This association will affect Sales Document Invoicing, SOP and POP.



Once any location assignment has been established that particular user will only see Orders/Returns, Deliveries and Invoices/ Credits etc. that are associated with that location. If, for example, the remaining filtered Orders that are still visible also contain transaction lines relating to other locations not assigned to that user the system will only progress lines based upon the user/ location assignment relationship.

The user will still have the ability to use the 'By Location' filter within the document control screen but they will only have the option to select between locations that have been assigned to them.

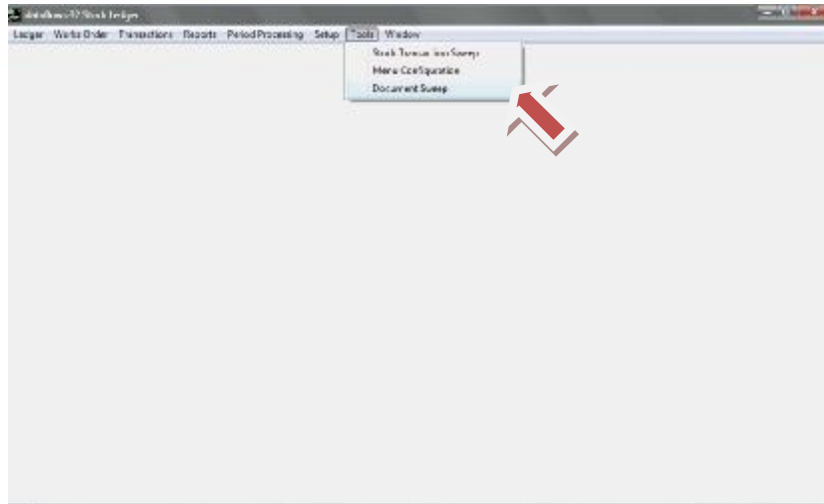


Tools

- Document Sweep

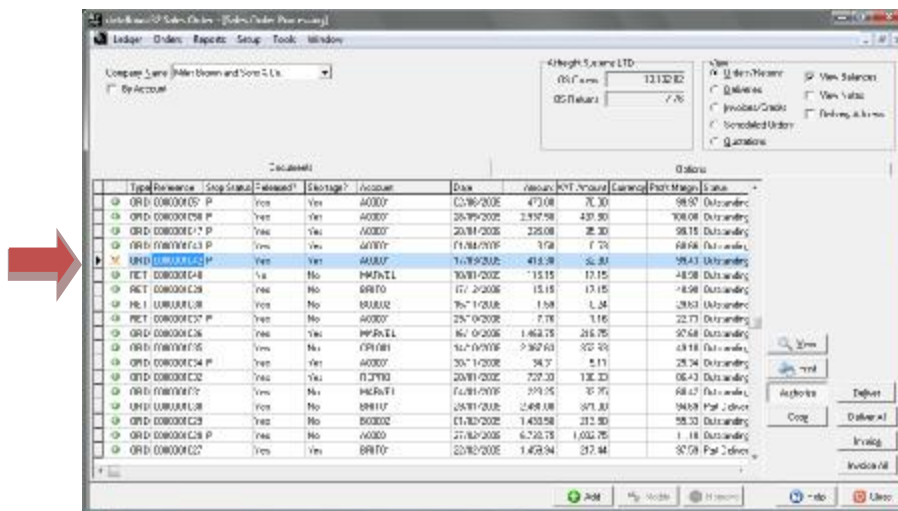
A new 'Document sweep' menu option has been added to this list.

This tool is used to correct imbalances generated by Stock transactions with negative batch numbers and to release documents locked as a result of a crash. This function can be run while the database is in use and it will ignore batches currently being processed.



As referred to above, documents will now be locked if the system is unable to roll back any adjusted stock balances as a result of a crash, i.e. failed network connection during delivery.

When the document is locked a padlock with a "cross" icon will replace the green dot with "tick" icon.



Sales/ Purchase Order Processing

Orders

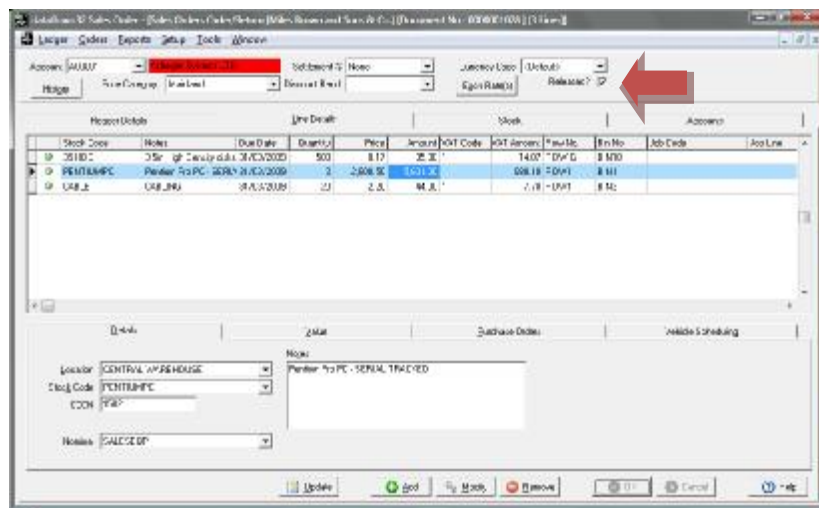
- Document Control

The system now generates the order lines in the same order as the source document when using the 'Copy' function.

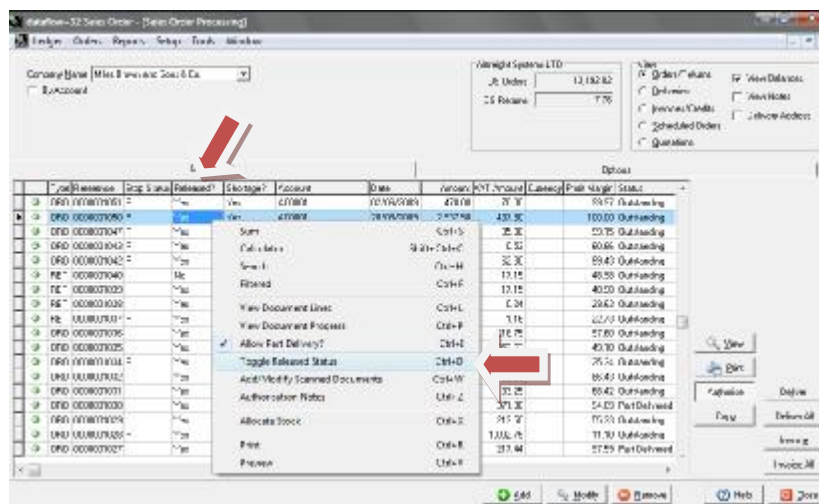
The system now displays document lines in the order they appear on the source document when using the right click 'View Lines' option. Job Reference 8399

The maximum number of characters available to type into the 'Notes' tab has been increased. Job reference 8557

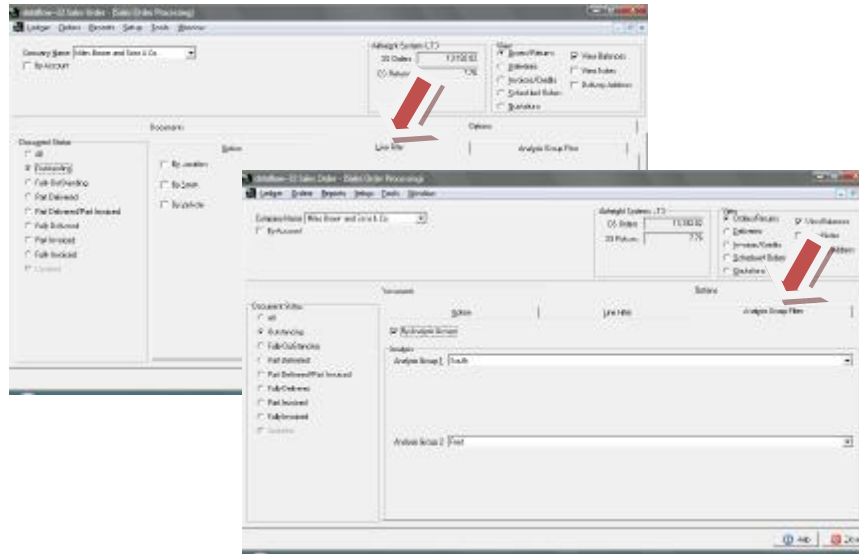
A new 'Released?' control has been added to both the SOP and POP Transaction Header Detail sections. If the transactions 'Released?' status is set to unchecked you will be unable to progress this document any further until it is 'Released'.



There is also a 'Toggle Released Status' 'Right Click' option allowing you to set either 'Yes' or 'No' to any transaction in the grid without having to modify the document.



The 'Line Filter' options from within the 'Options' tab have been relocated to their own 'Line Filter' tab in both SOP and POP to make room for the new 'Analysis Group Filter' filter option.



- **Part Deliver/Invoice an Order on Value**

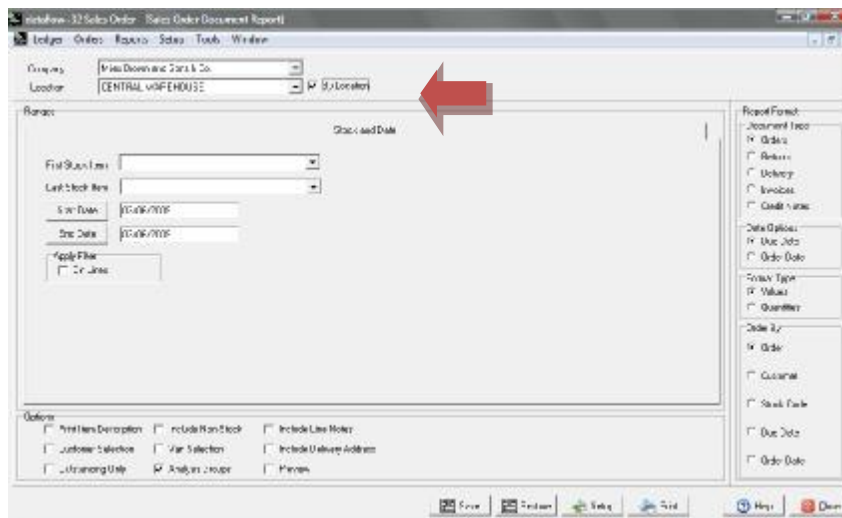
You can now part deliver/invoice an order on value instead of quantity. To achieve this, when entering an order you need to leave the quantity at "0".

You can then part deliver/invoice the order by entering the value you want to deliver/invoice at the time of conversion. The system will recognise that you have only delivered/invoiced part of the value, leaving the outstanding amount in orders to be delivered/invoiced later.

Reports

- **Outstanding Orders**

This report has had a new 'By Location' filter parameter added to it.

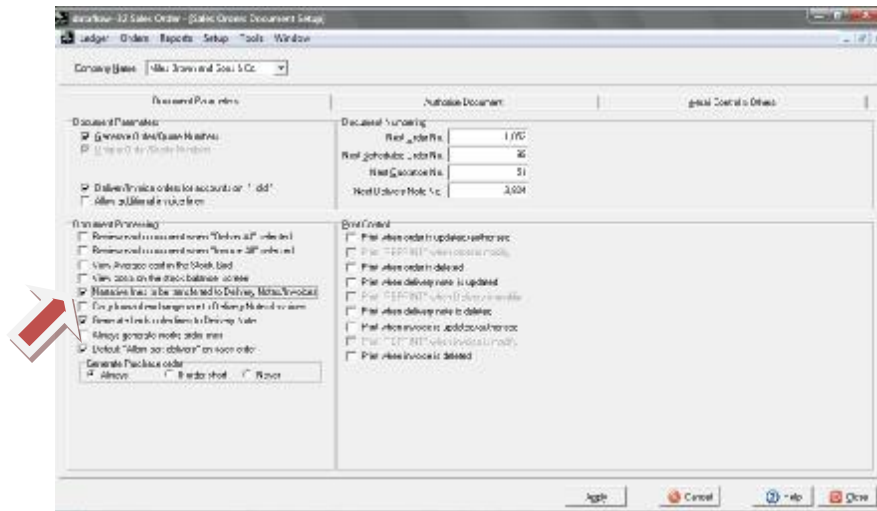


Setup

- Order Parameters

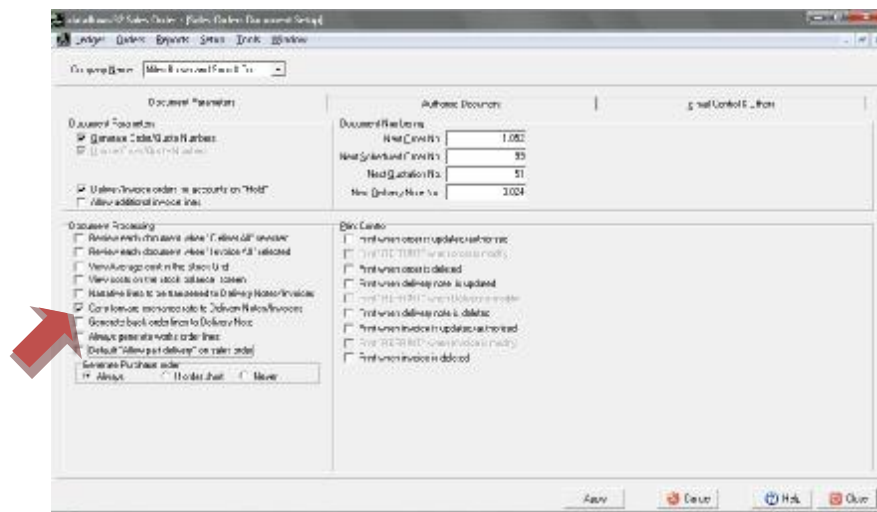
A new 'Narrative Lines to be transferred to Delivery/Invoices' parameter has been added to this screen.

When this option is checked the system will include all the narrative only transaction lines in the Delivery or Invoice that is created.



A new 'Carry forward exchange rate to Delivery Notes/Invoices' option has been included in this list of parameters for both SOP and POP.

If this option is checked the system will use the exchange rate set against the Sales/Purchase Order and not the current system exchange rate valid at the time the Delivery/Invoice is generated.

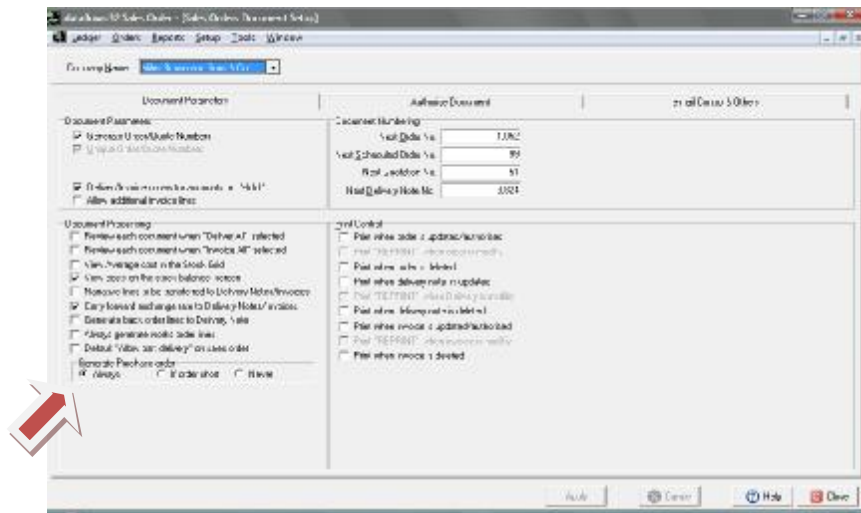


Sales Order Processing

Setup

- Order Parameters

There are three new Back to Back Ordering options added to this window under the 'Generate Purchase Order' parameters;



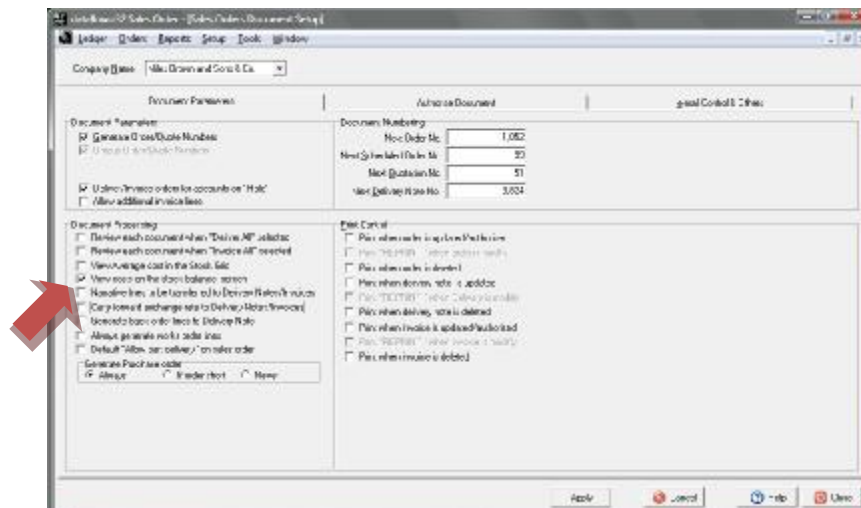
'Always' *The system will automatically always generate a PO.*

'If Order Short' *The system will automatically generate a PO only if there is insufficient stock to fulfill the order.*

'Never' *Will never generate a PO.*

In order for the 'Always' and 'If Order Short' parameters to function you must ensure that there are default suppliers setup against the stock codes.

A new parameter 'View cost on stock balance screen' has been added to this window.



If this parameter is checked you will enable the 'Average' and 'Standard Cost' balances to be viewable when selecting the 'right click' 'Stock Balance' option within the 'Line Details' tab when creating an Order.



Reports

- Forward Load of Outstanding Orders

The 'On Order' field is now available to add to this report through report designer. Job Reference 8518

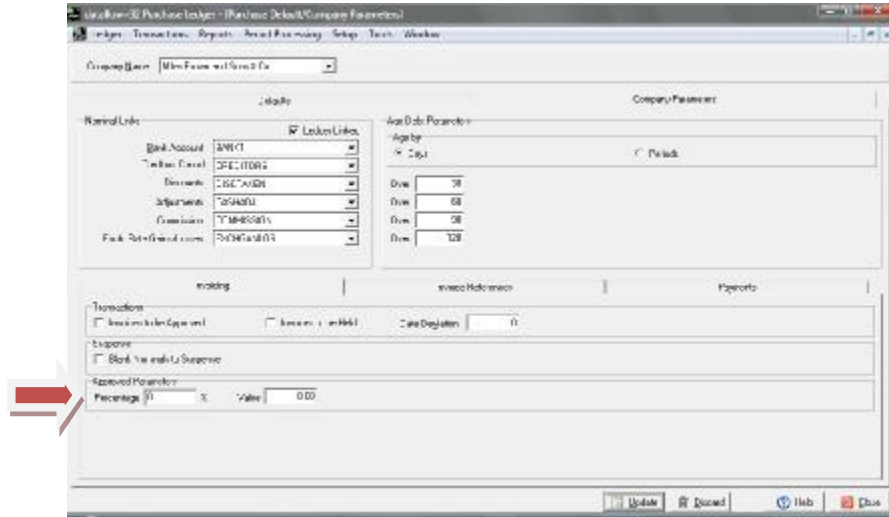
Purchase Order Processing

A new 'Approved Parameters' section has been added to the Purchase Ledger Setup/ Default/ Company parameters screen to allow Approval conditions to be set against Purchase Order Invoices. *(This new option will only appear if the parameter 'Invoices to be Approved' is unchecked).*

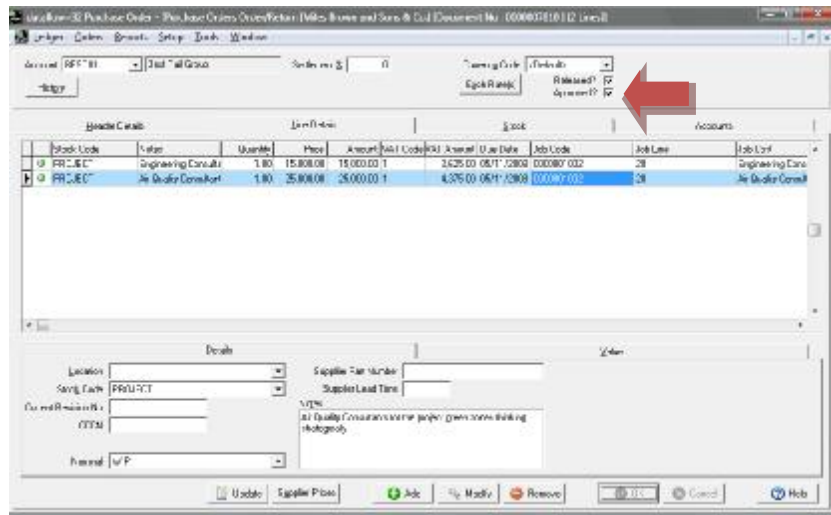
In this section there are two control fields, one by 'Percentage' and one by 'Value'. The conditions of these two fields are as follows;

'Percentage' *If any PO Invoice line value exceeds the original PO line value by the percentage then the document will be automatically set to 'Unapproved'.*

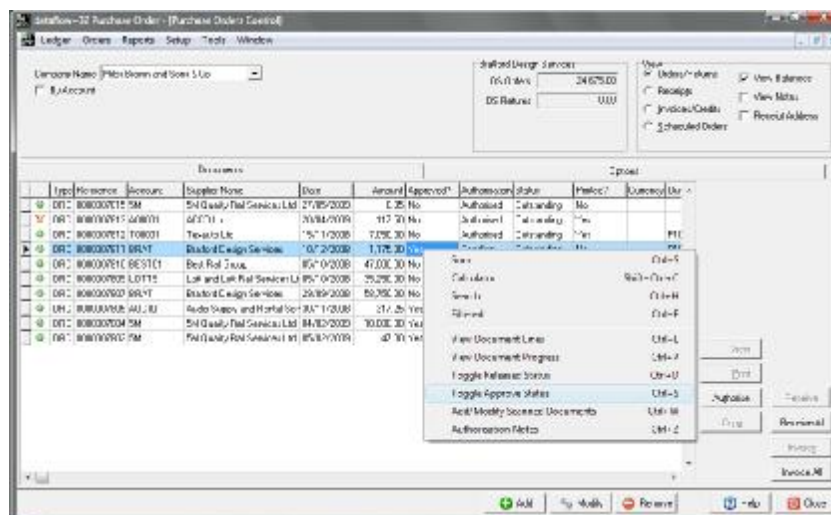
'Value' *If any PO Invoice line value exceeds the original PO line value by value the document will be automatically set to 'Unapproved'.*



The 'Approved' status can be controlled manually on the document header as detailed below.



There is also 'Toggle Approved Status' 'Right Click' option allowing you to set either 'Yes' or 'No' to any transaction in the grid without having to modify the document.



'Approval' is not the same as 'Authorisation'. You will still be able to update an 'Unapproved' document to the Purchase Ledger, but as the invoice will be set as 'Unapproved' it will require 'Approval' before the Invoice can be paid or allocated against.

Orders

- **Document Control**

There have been some changes made to the functionality for Purchase Order Invoices. Previously you were unable to amend the quantity when invoicing a PO Receipt, this has now been changed so you can, but based upon the following rules:

- If the quantity is changed when invoicing you will lose the ability to amend the price.
- If the price is changed when invoicing you will lose the ability to amend the quantity.

When modifying a document with a unit price in excess of 3 decimal places the system would correctly total the transaction, but not account for the fourth decimal place in the display. The number of decimal places has been increased for display purposes. Job Reference 8566

Setup

- **Document design**

The number of decimal places the 'Unit Price' field will display on the Purchase Order templates has been increased. Job Reference 8566

SYSTEM CORRECTIONS

General

Tools

- **Data Import**

It was found that importing STG currency Journals for a Company with a base currency of GBP together with using zero exchange rates before the values on the import file generated an exchange conversion imbalance from STG to GBP (default).

An error will now be generated 'Base amount %s does not equal base amount %s. Check exchange rates'.

- **MVA Export**

It was found that the 'Budget Annual Amounts' information was missing from the exported Access Database after running the export routine using an intermediate software release. This has been resolved. Job References 8387, 8388, 8416, 8454 and 8475

Sales Ledger

The transaction Query Log status was not being correctly set from 'Q' to 'R' when set to resolved from query, or from query to resolved if the systems 'Resolved Date' request had been cancelled. This has been rectified. Job Reference 8404

The un-resolved transaction log report now lists all un-resolved transactions.

Query logs did not allow notes to exceed more than 250 characters. The number of available characters has been increased. Job Reference 8440

- **View Accounts**

The error 'Couldn't perform the edit because another user changed the record' was generated as a result of modifying and updating address details multiple times without closing the window. This has been resolved. Job Reference 8248

Invoicing

- **Document Import Control**

An anomaly was found whereby the system would not import transactions with 'Product' lines due to a Stock Location data validation check and would return the error 'EBIS Error "Invalid stock/ Location"'. This has been rectified.

The field U_NOMCODE field length has been increased from 10 to 20 characters for use with the importing of manual Invoices. Job Reference 8467

Nominal Ledger

- **Accounts Enquiry**

The error 'Invalid BLOB handle in record buffer' was generated if the page down function was used with a large Chart of Accounts when the 'Notes' field was in view. This has been rectified. Job Reference 8503

Setup

- **Cost Centres**

You can no longer un-assign Cost Centre levels from a Company when budgets exist for that Company and the option 'Company Specific Cost Centres' is checked in the Cost Centre Analysis Setup.

Stock Ledger

- **Stock Enquiry**

It was found that adding the column G_PRICE to the stock enquiry screen had a negative effect on the speed in which the grid performed. This has been rectified. Job Reference 8371

Reports

- **Stock Valuation Report**

The error 'Invalid Modify Request'. Conversion Error from String "0" was generated when attempting to run this report. This has now been resolved. Job Reference 8456

Zero valuation balances were being incorrectly reported. This has been rectified. Job Reference 8499

- **Stock Check Listing Report**

The error 'Temporary Table Resource Limit' was generated when attempting to run this report with both the report parameters 'By Location' and 'Include Zero Physical Balance' checked. This has been rectified. Job Number 8425, 8460

Sales/ Purchase Order Processing

Orders

- **Document Control**

It was found that the document totals were being displayed on multiple pages rather than only on the last page when the carried and bought forward balances for those pages had not altered from the previous page. This has been resolved. Job Reference 8560