

# *dataflow*



DATAFLOW (UK) LIMITED  
DATAFLOW HOUSE  
MILL MEAD  
STAINES  
MIDDLESEX  
TW18 4UQ  
  
TEL: 01784 454171  
FAX: 01784 460806  
E-MAIL: [info@dataflow.co.uk](mailto:info@dataflow.co.uk)



## *dataflow*

*V6.008-7*

### *Release Notes*

#### **Please note:**

All sections in blue denote new features added to this version of *dataflow*



## TABLE OF CONTENTS

<b>GENERAL .....</b>	<b>3</b>
<b>SALES/PURCHASE LEDGER.....</b>	<b>3</b>
View Accounts.....	3
<b>SALES LEDGER .....</b>	<b>4</b>
View Accounts.....	4
Document Invoicing Control.....	4
Transactions.....	5
<b>PURCHASE LEDGER.....</b>	<b>6</b>
View Accounts.....	6
<b>NOMINAL LEDGER .....</b>	<b>7</b>
Accounts Enquiry.....	7
Inter Company Processing.....	8
<b>STOCK LEDGER.....</b>	<b>9</b>
Reports.....	9
<b>SALES ORDER PROCESSING/PURCHASE ORDER PROCESSING .....</b>	<b>11</b>
Document Control.....	11
<b>SALES ORDER PROCESSING .....</b>	<b>11</b>
Picking List.....	11
<b>PURCHASE ORDER PROCESSING .....</b>	<b>11</b>
Document Control.....	11
<b>VAT AND AUDIT TRAILS.....</b>	<b>12</b>
Audit Trail.....	12

## General

### Sales/Purchase Ledger

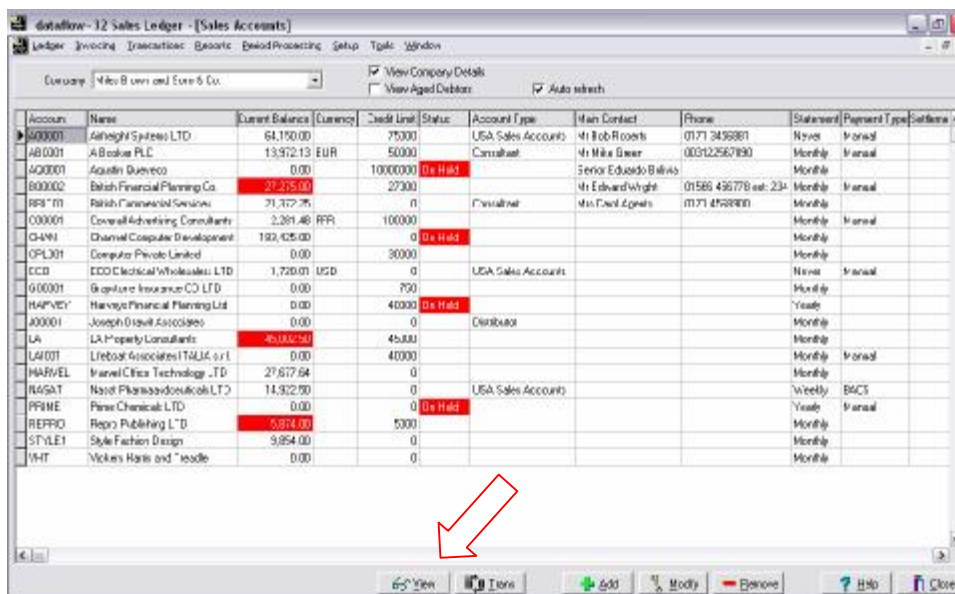
#### View Accounts

- The error "Maximum number of DBPROCESES already allocated" occurred on occasion due to the user unknowingly opening multiple instances of the same window using the 'View' button. This has been resolved by including a new 'Shift' key facility enabling multiple instances of the same window to be opened as explained below. (6528, 6584)

Holding the 'Shift' key while clicking the 'View' button will now open an additional instance of the account browse window.

Using this function in conjunction with the "Pin" button facility will enable users to browse multiple accounts simultaneously in both the Sales and Purchase ledgers. (6585)

A new 'Trans' button has also been added to both the Sales and Purchase 'View Accounts' window. This button opens up the transaction enquiry window for that account and can also be used using the new 'Shift' key facility to open multiple forms. (6528)



Account	Name	Current Balance	Currency	Credit Limit	Status	Account Type	Main Contact	Phone	Statement	Payment Type	Settlement
600001	Ashleigh Systems LTD	64,190.00		75000		USA Sales Account	Mr Bob Roberts	0171 349881	None	Manual	
AB001	A B Cooke PLC	13,972.13	EUR	50000		Consultant	Mr Mike Baker	003122567890	Monthly	Manual	
AQ0001	Aquelin Dueveto	0.00		10000000	On Hold		Senor Eduardo Bellas		Monthly		
B00002	British Financial Planning Co	27,235.00		27300			Mr Edward Wright	01586 436778 ext: 234	Monthly	Manual	
BS* M	British Financial Services	71,717.76		0		Consultant	Ms Carol Agnals	0171 4752800	Monthly		
C00001	Coverall Advertising Consultants	2,281.48	RRP	100000					Monthly	Manual	
CH4N	Charnell Computer Development	192,425.00		0	On Hold						
CP1301	Computer Probe Limited	0.00		30000					Monthly		
CC0	CCO Electrical Wholesale LTD	1,729.01	USD	0		USA Sales Account			None	Manual	
G00001	Geonitex Insurance CO LTD	0.00		700					Monthly		
HAPVEY	Harvey Financial Planning Ltd	0.00		40000	On Hold				Yearly		
J00001	Joseph David Associates	0.00		0		Distributor			Monthly		
LA	LA Property Consultants	46,032.24		45,000					Monthly		
LAL01	Libros Asociados ITALIA srl	0.00		40000					Monthly	Manual	
HARVEL	Harvel Clinica Technology LTD	27,617.64		0					Monthly		
RASAT	Rasat Pharmaceuticals Ltd	14,922.70		0		USA Sales Account			Weekly	BACS	
PRIME	Prime Chemicals LTD	0.00		0	On Hold				Yearly	Manual	
REPRO	Repro Publishing LTD	5,674.00		5000					Monthly		
STYLE1	Style Fashion Design	9,854.00		0					Monthly		
VHT	Vickers Harris and Trade	0.00		0					Monthly		

- Whilst using the 'Shift' key facility to open multiple instances of either the 'View' or 'Trans' windows, after closing one of the instances the program would continue to open new windows when the 'View' or 'Trans' button were clicked, regardless of whether or not the shift key were held down. This problem was reported against version 6.008-5 and has now been rectified in version 6.008-7. (6639)

## Sales Ledger

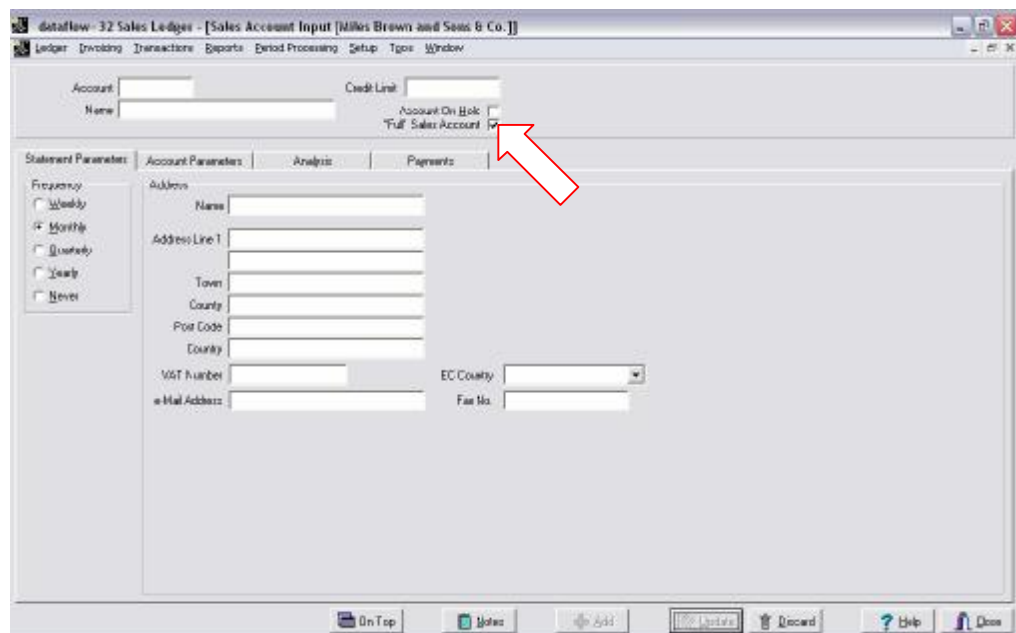
### View Accounts

- A new parameter 'Full Sales Account' is available when adding a new Sales Ledger Account and is checked by default upon creating a new account.

When unchecked this new facility enables users to create, in effect, temporary Sales Ledger Accounts which can then be used for Sales Order Quotation purposes ONLY.

If the Sales Order Quotations created for these accounts are then removed users will be able to delete the account from the Sales Ledger Enquiry rather than accumulate an unnecessary build up of inactive Sales Accounts.

If the Sales Order Quotations created for these accounts are then 'Converted' into a Sales Order the system will automatically flag that Sales Account as a 'Full Sales Account' which you will not be able to Delete. (6588)



### Document Invoicing Control

- An 'Access violation' error occurred when searching the document view if the columns 'S\_DUEDAYS' and 'X\_DUETYP' were displayed within the grid.

These columns have been removed from the grid as they are not relevant to this enquiry grid. (6220)

- The shortcut keys on the add/modify invoice windows for changing the various tabs would, under some circumstances, activate the menus instead. This problem was reported against version 6.008-5 and has now been resolved in version 6.008-7. (6656)

***Transactions***

- Under certain circumstances the error "Field 'G\_THEIRSTOCKCODE' not found" was generated. This was due to the field length exceeding the maximum allowed in the temporary transaction table. (6302, 6252)

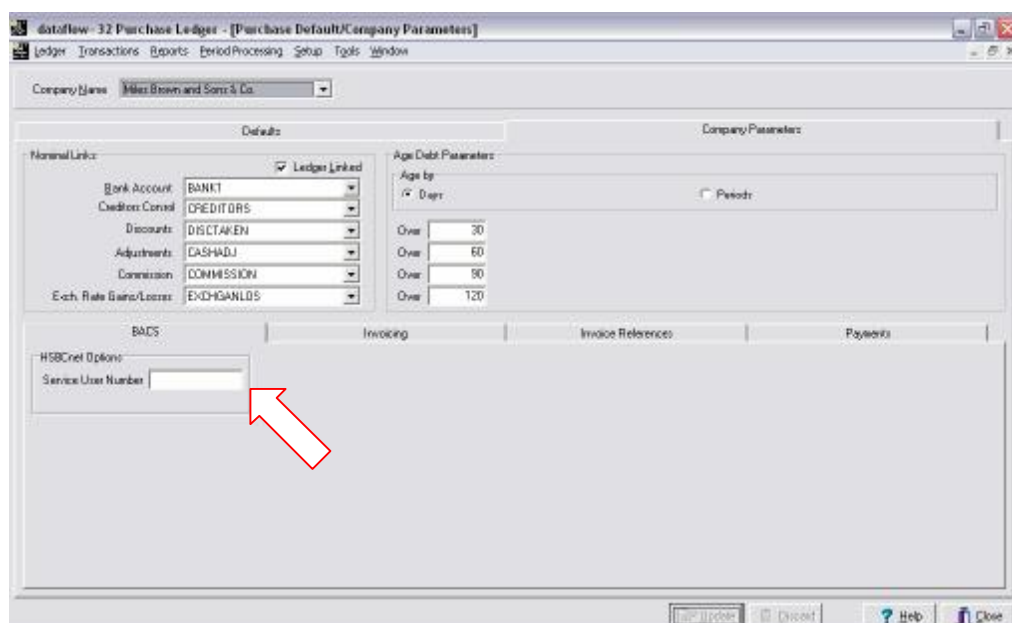
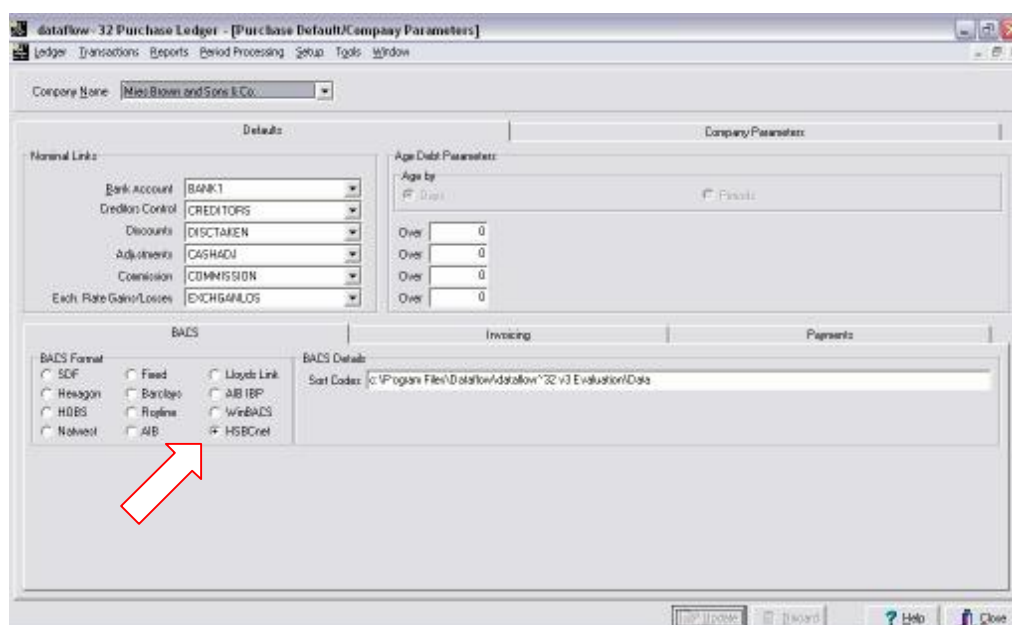
## Purchase Ledger

### View Accounts

- A display issue was found whereby particular users were unable to view the 'Payment Terms' under the 'Account Parameters' tab for supplier accounts. This has been resolved. (6390)

### Default/ Company Parameters

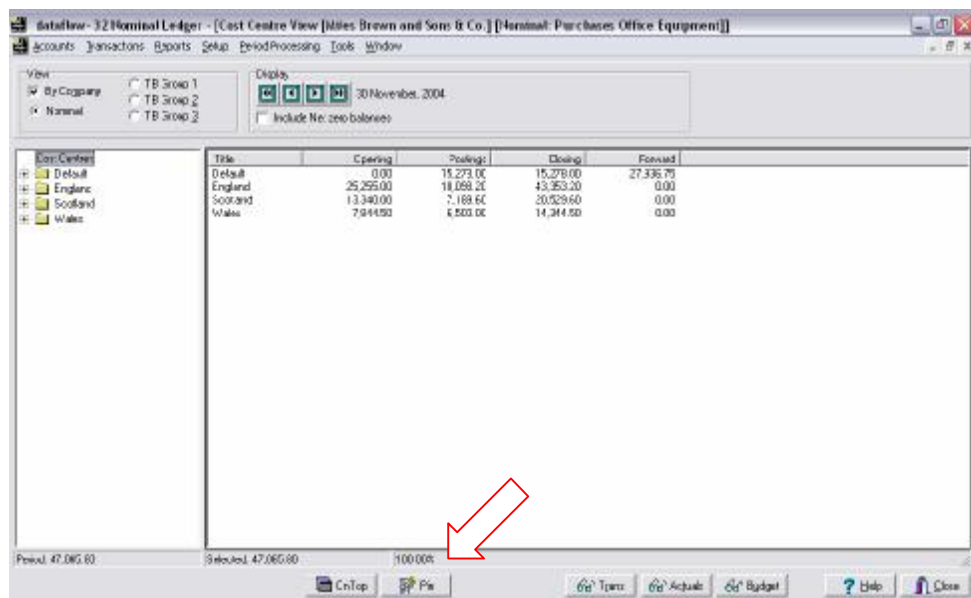
- A new HSBCnet BACS format has been added within the 'BACS' tab under the 'Defaults' section. Once this option is selected an additional 'BACS' tab will be accessible under the 'Company Parameters' section where the HSBCnet 'Service User Number' input will be required (This number is issued by HSBC). (6242)



## Nominal Ledger

### Accounts Enquiry

- The error "Maximum number of DBPROCESES already allocated" occurred on occasion due to the user unknowingly opening multiple instances of the same window using the 'View' button. This has been resolved by including a new 'Shift' key facility enabling multiple instances of the same window to be opened as explained below. (6528)
- Holding the 'Shift' key while clicking either the 'View' or 'Cost Centres' button will now open an additional instance of both enquiry windows. Using this function in conjunction with the new "Pin" button facility will enable users to perform multiple enquiries on different accounts simultaneously. (6585)



- Whilst using the 'Shift' key facility to open multiple instances of the 'View' or 'Cost Centres' windows, after closing one of the instances the program would continue to open new windows when the 'View' or 'Cost Centres' button were clicked, regardless of whether or not the shift key were held down. This problem was reported against version 6.008-5 and has now been rectified in version 6.008-7. (6639)
- The 'Change' button used to re-apportion Cost Centre balances was only available if you held the 'Shift' key when selecting the 'Cost Centres' button within the Nominal Enquiry. This problem was reported against version 6.008-5 and has been rectified in version 6.008-7. (6685)
- The 'Modify Batch' menu option in the Nominal View Transactions tab was only available if you held the 'Shift' key when selecting the 'View' button within the Nominal Enquiry. This problem was reported against version 6.008-5 and has been rectified in version 6.008-7. (6685)

### ***Inter Company Processing***

- Under certain circumstances it was possible to post transactions with a one sided % markup.

This problem occurred when multiple transactions were awaiting update but then only a defined selection was being updated. The remaining posting(s) would then have one sided % markup(s) the next time the update took place. This has now been rectified. (6235)

- If both the 'Nominal' and 'Handling Nominal' which are set within the 'Inter Company Parameters' setup window were selected as a Cost Centred Nominal codes it was possible for a rounding error to be generated when processing the Inter Company Transactions. This has now been resolved. (6642)

## Stock Ledger

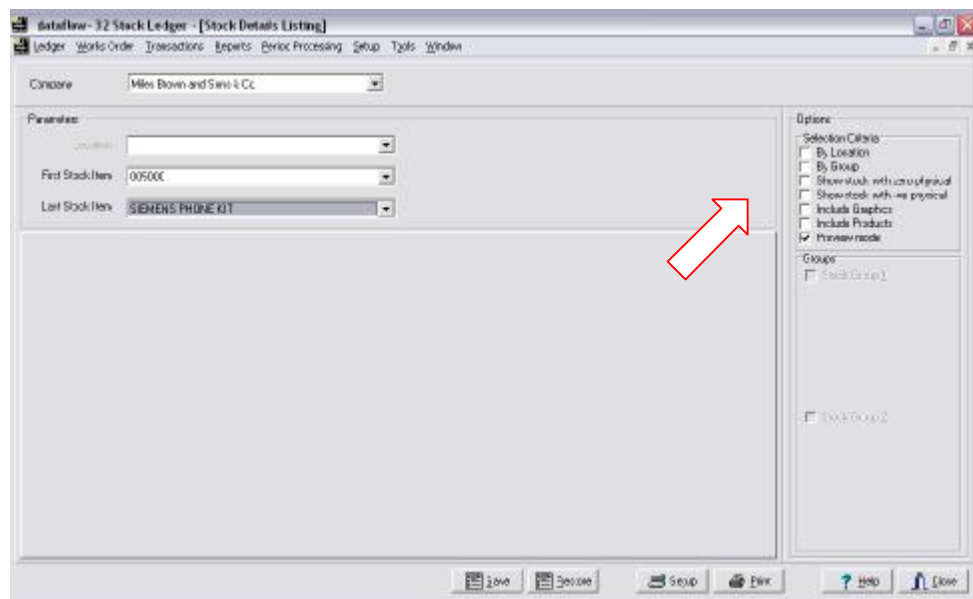
### Reports

**New Parameters have been added to the following stock reports:**

- Stock Details Listing
- Stock Inventory Listing
- Stock Serial-Batch Inventory Listing
- Stock Valuation Report *(Except the parameter to include Products)*
- Stock Price Lists
- Stock Movements Report *(Except the parameter to include Products)*

**The new parameters are as follows:**

- A new parameter to "Show stock with zero physical". When this option is checked the report will display stock items that have a zero physical balance. (6542)
- A new parameter to "Show stock with -ve physical". When this option is checked the report will display stock items that have a negative physical balance. (6542)
- A new parameter to "Include Graphics". When this option is checked and the field G\_GRAPHICS is added to the template the report will display the image that is saved as part of the extended description within the stock item setup. (6376)
- A new parameter to "Include Products". When this option is checked the report will display products as well as stock items. (6542)



### ***Stock Item Setup***

- In prior versions it was possible, providing the physical balance was zero for a user to un-assign a stock code from its location(s) during the creation of SOP, POP and Sales Invoicing transactions containing that particular stock code. This procedure generated the error "Field 'G\_KEY' not found".

The system will now display the message 'Unable to deselect - balance exists' rather than the error. (6333, 6317, 6301).

### ***Stock Transfers***

- Upon discarding a stock transfer transaction the system reversed the proposed transfers even though they hadn't been updated. This led to incorrect stock balance adjustments. This has now been resolved. (6627)

## **Sales Order Processing/Purchase Order Processing**

### ***Document Control***

- The error "Field 'S\_AUTHTEXT' not found" was generated when attempting to use the right click menu option 'View Authorised Text' from within the delivery document view. This facility has been removed from this view as it is not applicable. (6298)
- Either "Cannot focus a disabled or invisible window" or "Dataset not in Edit Mode" errors were generated when modifying a document, selecting the 'Accounts' tab then carriage returning on an account. This has been rectified. (6300)
- When modifying either a Delivery or Invoice's line details it was possible to access the 'Stock Tab', double click or carriage return on a stock code and this would change the selected stock code on the modified line. The same process was also possible using the 'Accounts Tab'. This should not have been possible and is no longer available when modifying Deliveries or Invoices. (6364)

## **Sales Order Processing**

### ***Picking List***

- The error 'General SQL error. Function unknown CAOLESCE' occurred when attempting to print this report. This has now been resolved. (5258)

## **Purchase Order Processing**

### ***Document Control***

- The average cost for undelivered stock codes was being re-calculated each time a part delivery took place for that order. This has been rectified. (6231)
- An issue was found when removing an Invoice. The system would retain the invoice reference and display this reference against the delivery. The reference will revert back to the original delivery reference prior to invoicing. (5341)
- Stock quantity balances were effected when a delivery was invoiced, the invoice then removed and the delivery modified but the changes against the delivery then discarded. This procedure created an entry against the stock transactions for the discarded changes made against the delivery. This has now been resolved. (5341)

## VAT and Audit Trails

### Audit Trail

- A new option has been added to the parameters of this report to "Print Last Batch Only". When this option is checked the 'First Batch' number will automatically default to the batch number displayed within the 'Last Batch' selection field.

This parameter can also be saved using the 'Save' button at the bottom of the report parameters window. (5444)

